



**INTERNATIONAL RADIATION
SYMPOSIUM, APRIL 2016,
AUCKLAND, NEW ZEALAND**



Where minds meet

Hosted by



**THE UNIVERSITY
OF AUCKLAND**

NEW ZEALAND

Te Whare Wānanga o Tāmaki Makaurau

A scenic view of the Auckland waterfront in New Zealand. The Sky Tower stands prominently in the background against a blue sky with wispy clouds. The harbor is filled with various boats, including a red and white ASB Coastguard rescue boat in the foreground. The water is a deep blue, and the city buildings are visible along the shore. A person is swimming in the water in the lower left corner.

Nau mai, haere mai, whakaeke mai

Welcome to Auckland,
New Zealand

Contents

Letters of support	4	Conference host	17
The University of Auckland	4	The University of Auckland	18
Ministry of Science and Innovation	5	Local Organising Committee	19
National Institute of Water and Atmospheric Research	6	Conference budget	20
Mayor of Auckland	7		
Conference support	8	Venue and accommodation	21
Air New Zealand	9	Proposed venue: Owen G. Glenn Building	23
		Venues for social functions	25
Destination Auckland	11	Beyond the official programme	31
Aotearoa, New Zealand	13	Experience Auckland	32
The Pacific meeting place	14	Beyond the programme	34
Auckland – right on your doorstep	15	Useful information	39

Hosted by



With support from



**LETTER OF
SUPPORT**

DEPARTMENT OF PHYSICS
Faculty of Science

Professor Richard Easther
Head of Department



Level 6, Building 303, 38 Princes Street
Auckland 1142, New Zealand

Tel: +64 9 373 7599 ext 81585
Fax: +64 9 373 7445

r.easther@auckland.ac.nz
www.physics.auckland.ac.nz

The University of Auckland
Private Bag 92019
Auckland 1142, New Zealand

International Radiation Commission
c/o LASP Laboratory for Atmospheric and Space Physics
University of Colorado
Boulder, Co 80309-0311
USA

To the attention of the International Radiation Commission:

On behalf of the Department of Physics, I am delighted to support the bid to host the International Radiation Symposium at the University of Auckland in 2016.

This conference will be a great opportunity to discuss the latest concepts in atmospheric radiation, including topics in remote sensing and climate that are of interest to several of our department members, three of whom are on the Organizing Committee. The Department of Physics has a long tradition of research into climate and weather-related atmospheric phenomena, and bringing this meeting to New Zealand would be a huge boost for the field here.

If the bid is successful, I look forward to welcoming you all here in 2016.

Yours sincerely,



Richard Easther
Head, Department of Physics

**LETTER OF
SUPPORT**



Office of Hon Steven Joyce

Minister for Economic Development
Minister of Science and Innovation
Minister for Tertiary Education, Skills and Employment
Associate Minister of Finance

13 JUN 2014

International Radiation Committee
c/o LASP -Lab. for Atmospheric and Space Physics
University of Colorado
Boulder, CO 80309-0311
USA

Dear Committee Members of the International Radiation Committee

As Minister for Science and Innovation, I am writing to express my support for the International Radiation Symposium to be held in New Zealand in 2016.

The New Zealand Government has recently launched its draft National Statement of Science Investments, a forward-looking strategy which reiterates New Zealand's commitment to producing excellent science, and strengthening international science relationships. Your conference's objectives would allow the sharing of knowledge with New Zealand researchers in the field, and facilitate ongoing and productive international relationships.

I hope that New Zealand's bid to host the 2016 International Radiation Symposium comes to fruition and builds on the success of the congress recently held in Germany.

Yours sincerely,

A handwritten signature in blue ink, appearing to be 'S. Joyce', written over a faint, larger version of the signature.

Hon Steven Joyce
Minister of Science and Innovation

**LETTER OF
SUPPORT**



22nd July 2014

International Radiation Commission
c/o LASP Laboratory for Atmospheric and Space Physics
University of Colorado
Boulder, Co 80309-0311
USA

Dear Commissioners

On behalf of NIWA, I am delighted to support the bid to host the next International Radiation Symposium in Auckland in 2016. I believe the conference will provide a fantastic platform for exchanging ideas and knowledge about atmospheric radiation.

NIWA has a long history of research into weather and climate-related problems, including modelling and observations of atmospheric radiation from ultraviolet to microwave wavelengths. The subject matter of this Symposium is highly relevant to us, and we very much look forward to the prospect of experiencing this Symposium within New Zealand.

Yours sincerely

NATIONAL INSTITUTE OF WATER & ATMOSPHERIC RESEARCH LIMITED

A handwritten signature in black ink, appearing to read 'John Morgan', is written over a light blue horizontal line.

John Morgan
CHIEF EXECUTIVE OFFICER

**LETTER OF
SUPPORT**

30 June 2014

International Radiation Commission

Dear President

Thank you for the opportunity to present Auckland's credentials as a candidate for hosting the International Radiation Symposium in 2016. I would officially like to invite this group to Auckland, New Zealand.

Each and every one of your guests can be assured of a warm welcome to Auckland and an opportunity to sample the very best of our renowned Kiwi hospitality – characterised by friendliness and sincerity.

Auckland boasts a unique mix of magnificent natural features, a rich and distinctive cultural heritage, well supported with 'big city' sophistication: exceptional galleries, theatres, shopping and restaurants. Set on three harbours, it is bounded by rainforests, beaches and numerous islands. These natural wonders are all within 40 minutes of a globally connected and cosmopolitan central business district.

Auckland is a vibrant city and has been ranked one of the top 10 cities to visit by Lonely Planet and 3rd internationally for its quality of living. Auckland is at the forefront of hosting international events in New Zealand. It offers excellent infrastructure provided by a professional industry, centralised event facilities and has a worldwide reputation for superior hospitality. Auckland is the home of New Zealand's major airport and receives a frequency of flights unparalleled by any other city in the country.

We are certain that the scientific atmospheric radiation community will take advantage of this conference where speakers and participants from around the world can come together to network, exchange relevant results and ideas and to encourage international cooperation.

We look forward to welcoming your many guests from around the world to our city in 2016
nau mai, haere mai.

Yours sincerely



Len Brown
MAYOR OF AUCKLAND



Conference support

Auckland Convention Bureau

Auckland Convention Bureau is part of ATEED (Auckland Tourism, Events and Economic Development) – Auckland’s economic growth agency and an Auckland Council-controlled organisation. One of ATEED’s responsibilities is to support and enhance Auckland’s ability to compete internationally.

Auckland Convention Bureau (ACB) is here to help you create an unforgettable event from start to finish, with information, assistance and recommendations for everything from venues and local suppliers to transport and promotion. ACB is responsible for marketing Auckland as a destination for conventions, meetings and all business events and offers planners a wide range of support.

Conference support

- We offer free, impartial advice on venues, accommodation, activities and service providers to best suit your conference requirements.
- We facilitate site inspections to familiarise you with the infrastructure Auckland has to offer.
- We supply marketing materials such as brochures, imagery and DVDs to help drive delegate numbers.
- We provide online access to professional photographs for use in conference marketing materials.
- Link your conference website to aucklandnz.com and let your delegates explore what’s on offer in Auckland.

- We provide an onsite activities and information desk for delegates. We can set up a free mobile i-SITE visitor centre desk onsite so that delegates can discover and book things to do and places to go during and after the conference.

Tourism New Zealand

Tourism New Zealand will help to make your next conference a unique, fresh and unforgettable experience in New Zealand. We’ve proudly earned a reputation as exceptional hosts with world-class facilities. Matched by the spectacular scenery and diversity around every corner, any visit to New Zealand leaves a life-long impression. The ‘can do’ attitude of our people gets things done too, which means your event here is easy to arrange and will be a smooth-running success.

Tourism New Zealand is proud to provide government support to the bid through

- Funding of a full financial feasibility study to ensure the event is a financial success.
- Financial assistance to local organising committee.
- Marketing assistance help boost delegate numbers and attract the best international speakers.
- Full access to our image library and promotional DVDs for use on your website, ensuring a professional and informative tool for your delegates.
- Local knowledge for pre and post touring ideas across New Zealand.

Air New Zealand

Twice named as the prestigious Air Transport World Airline of the Year, Air New Zealand delivers uniquely Kiwi journeys to more than 13 million customers who fly to, from and within New Zealand each year.

Featuring award-winning New Zealand wines and menus designed by celebrity chef Peter Gordon, Air New Zealand offers visitors their first taste of New Zealand the moment they step on-board our aircraft.

Air New Zealand connects customers to 25 destinations within New Zealand and 27 international ports in Australia, the Pacific Islands, China, Hong Kong, Japan, USA, Canada and the United Kingdom.

As a member of the Star Alliance network, Air New Zealand provides access to almost any destination in the world.

Air New Zealand offers a Conference Support Programme*, designed to support organisations hosting or organising conferences in New Zealand to encourage as many international participants to attend as possible.

Air New Zealand welcomes applications from the hosts or organisers of

conferences in New Zealand that meet the following criteria;

- At least 150 international participants are expected to attend
- There is at least a six month lead time before the conference commences

Sign up with Air New Zealand's Conference Support Programme* and registered participants from relevant markets will receive access to discounted travel on Air New Zealand operated flights when booking their travel online to attend the conference in New Zealand. Participants planning on taking a companion to New Zealand with them and who book their companion's travel at the same time will enjoy the same discount for their travel companion.

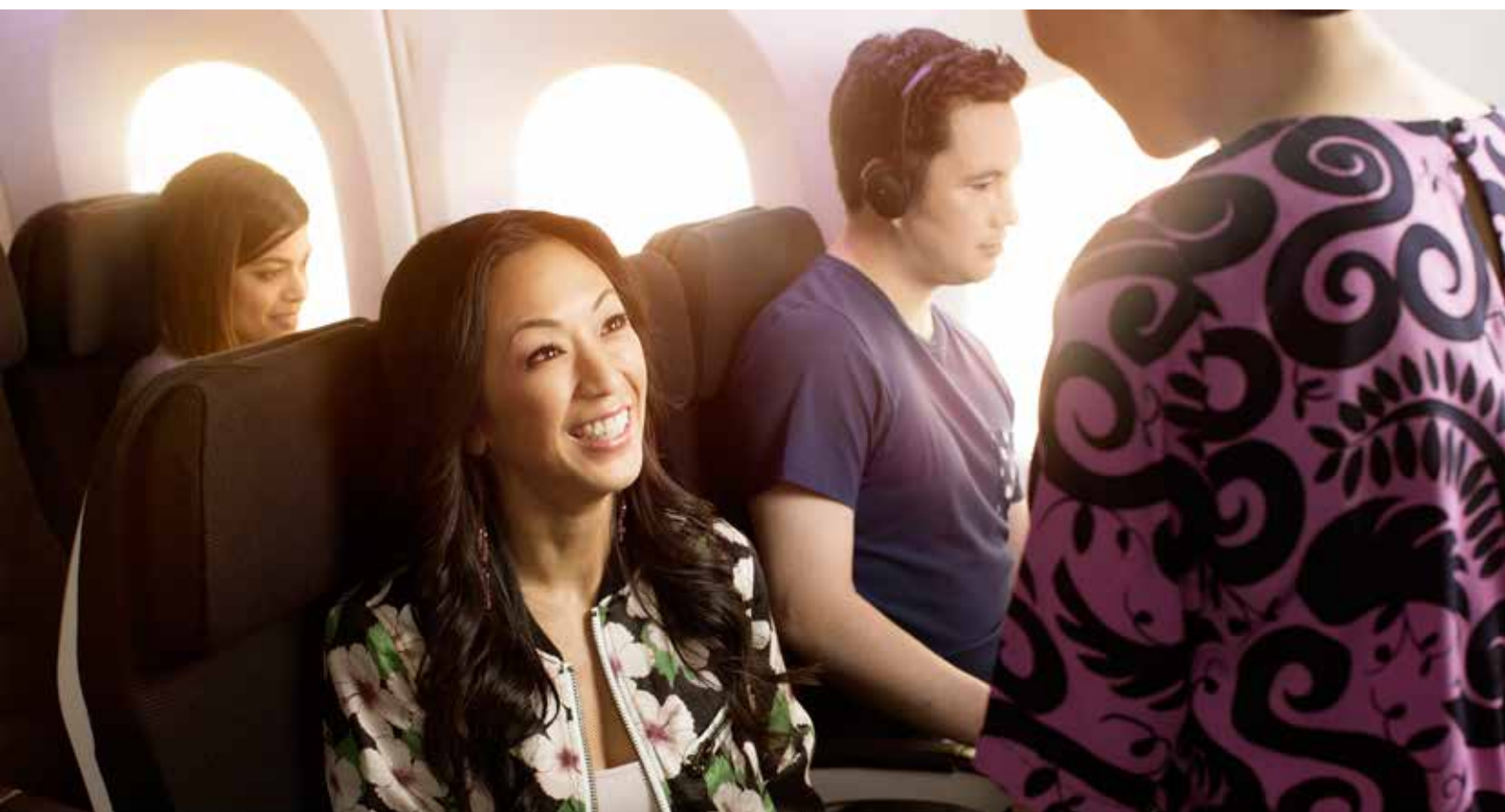
www.airnewzealand.co.nz/conference-support

*Terms and conditions apply



AIR NEW ZEALAND 

A STAR ALLIANCE MEMBER 





Mt Eden,
Maungawhau



Destination Auckland

No reira, nau mai haere mai ki Aotearoa

We look forward to welcoming you to Aotearoa,
the land of the long white cloud

Aotearoa, New Zealand

The last major land mass in the world to be discovered and occupied, ours is a young country of awesome beauty.

From majestic fiords and alps in the South Island to the native forests and sandy bays of the north, New Zealand is full of stunning landscapes, unique flora and fauna and unspoiled countryside. The overwhelming impression of the land is pure and green, with fresh air and clean waters.

Cities and towns are spaced the length of the country, with miles of green fields interspersed with forests of native trees and bush or commercial forests of pine.

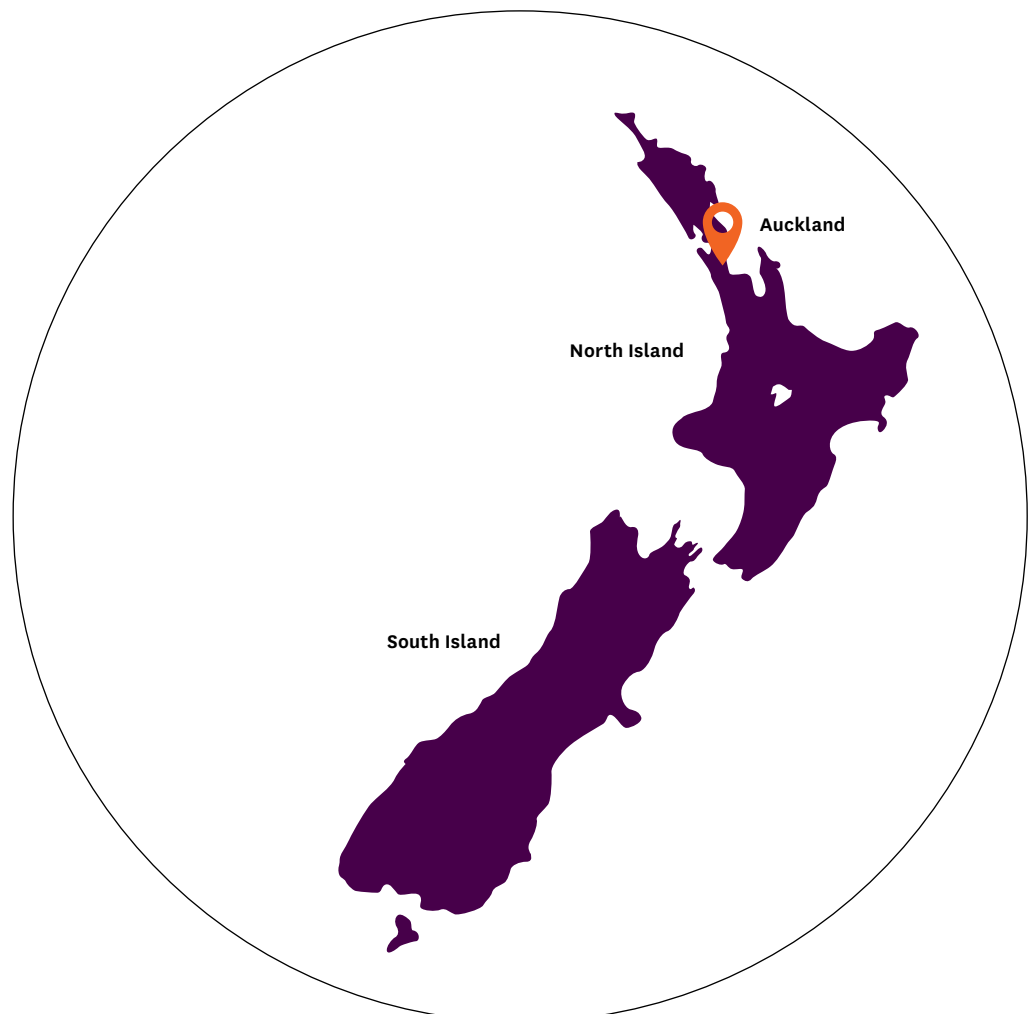
Beautiful sub-tropical beaches are to be found everywhere—even within 10 minutes of downtown Auckland.


New Zealand offers a modern and sophisticated urban lifestyle combined with a natural and unspoiled rural heritage that sets it apart from the rest of the world. We have a stable political environment and have led the world in many areas of social policy, scientific achievements and sporting triumphs. For a nation of 4.5 million people, New

Zealand produces an extraordinary number of achievers in many areas.

There is a rich indigenous Māori culture entwined with many cultures from around the world. New Zealanders are friendly, independent, free-spirited and welcoming. There is nothing we enjoy more than showing overseas visitors 'our place' in the South Pacific.

AOTEAROA, NEW ZEALAND





The hongi is
a traditional
Māori welcome

The Pacific meeting place

With an unbeatable combination of big city style and a stunning natural setting, Auckland has everything you need to make your next business event one to be remembered.

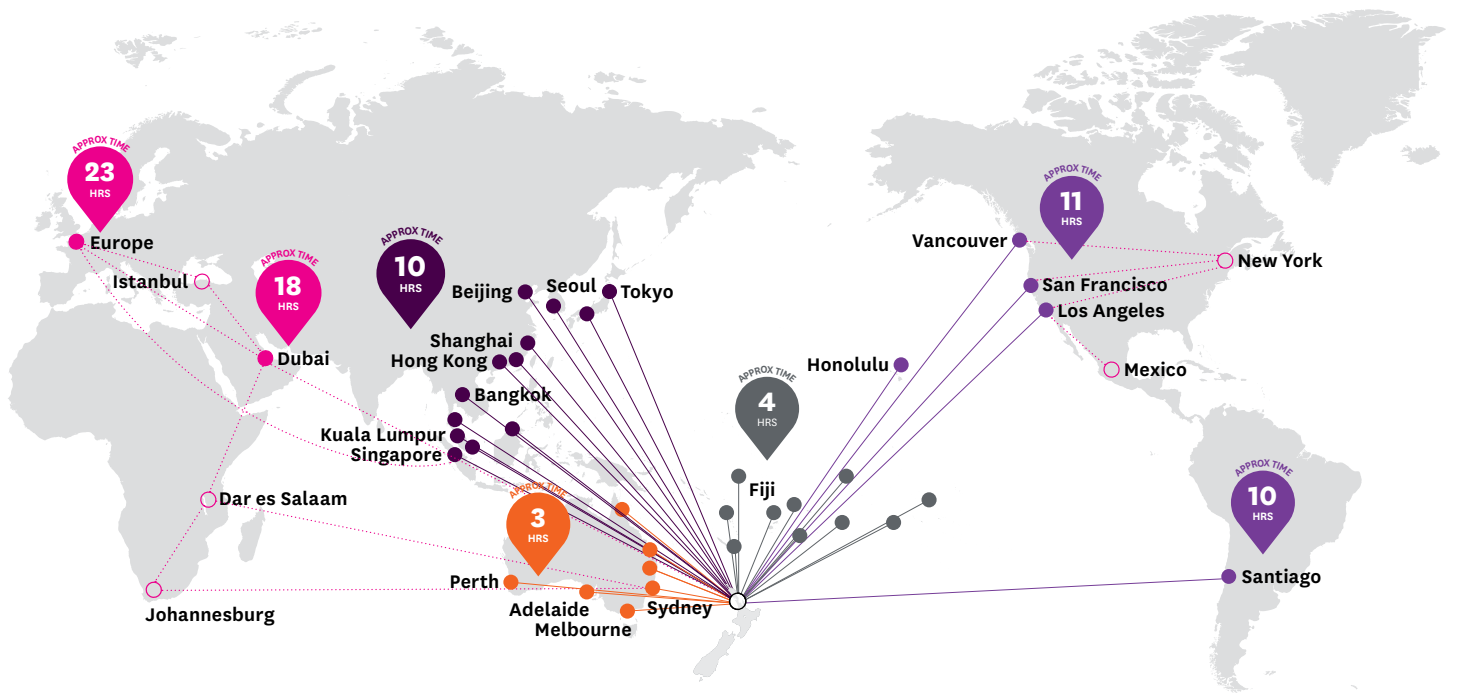
Auckland's first-rate conference venues, accommodation and infrastructure are complemented by world-class shopping, superb food and wine, and buzzing waterfront precincts. And right on the doorstep are endless adventures for your group, from island retreats and wine tours to skydiving and sailing. The modern city centre is surrounded by sparkling harbours, native rainforest, beautiful beaches and scenic wine regions, offering a huge range of activities.

With strong Māori and European roots, Auckland is also the largest Polynesian city in the world, and a true melting pot of cultures from around the globe. This cosmopolitan character is what gives

Auckland such an exciting diversity of cuisine, art, music, cultural experiences and events for you to experience any time of year.

Auckland is New Zealand's largest city, with a population of nearly 1.5 million, and is home to one in three New Zealanders. It is also the country's biggest urban centre, its financial and economic powerhouse, and the gateway to New Zealand.

Auckland – right on your doorstep



70%

Auckland Airport handles over 70% of all international arrivals into New Zealand

18

International airlines fly direct to Auckland from 32 destinations around the world



20km

The central business district is just 20km (40 minutes) from Auckland Airport

336+

Weekly flights connecting Auckland to the world



International arrivals every day

#2

Airport in Australasia after Sydney

*Flight figures correct as at January 2014

The Owen
G. Glenn
Building at the
University of
Auckland





Conference hosts

The University of Auckland



Your conference hosts

The University of Auckland would be delighted to host the next IRS at the university, and warmly invites the International Radiation Commission to make New Zealand the next stop on the international journey taken by these Symposia. Located at 37°S, Auckland will mark the southernmost location yet visited and our maritime Pacific environment will ensure a pleasant climate at that time of year.



Proposed Dates 17-23 April 2016

April would provide warm weather and great opportunities for delegates to enjoy New Zealand's world renowned natural environment.

Auckland's temperatures range between 16°C and 24°C in April.

Benefits of hosting International Radiation Symposium in Auckland

While New Zealand is a tremendously popular place to visit in general, it is important to note that The University of Auckland ranks very highly by world standards and it will be a great location for scientific discourse. Many of New Zealand's scientists, including those from other universities and from Government research labs such as NIWA, will especially enjoy the opportunity to

exchange ideas with the international visiting delegates. Some of the scientists you already know from having attended previous Symposia. Others will be very interested to meet with the International Radiation Commission for the first time. Hosting the event in Auckland will see a greater attendance of atmospheric radiation scientists from the neighbouring countries of Australia, South East Asia and South America.





Kayaking on
Auckland's
Hauraki Gulf

Local Organising Committee

**Professor Roger Davies,
The University of Auckland,
Physics Department (Chair)**

Roger, who holds the Buckley-Glavish Chair in Climate Physics, is a present and past member of the International Radiation Commission. He has worked in the field of atmospheric radiation for over 40 years, notably in three-dimensional radiative transfer and remote sensing applications to retrieve cloud properties.

**Professor Geoff Austin,
The University of Auckland,
Physics Department**

Geoff holds the Chair in Geophysics, and has a long career in atmospheric physics, notably in the use of weather radar detect precipitation.

**Dr. Gilles Bellon,
The University of Auckland,
Physics Department**

Gilles joined us recently from the National Centre for Meteorological Research in France where he gained extensive experience in modelling tropical climate systems.

**Dr. Richard McKenzie,
Emeritus Scientist, National
Institute for Water and
Atmosphere (NIWA)**

Richard has extensive experience in the field of UV radiation and the remote sensing of ozone.

**Ben Liley, Scientist, National
Institute for Water and
Atmosphere (NIWA)**

Ben has extensive experience in atmospheric radiation, notably the measurement and modelling of global solar irradiance.



Conference budget

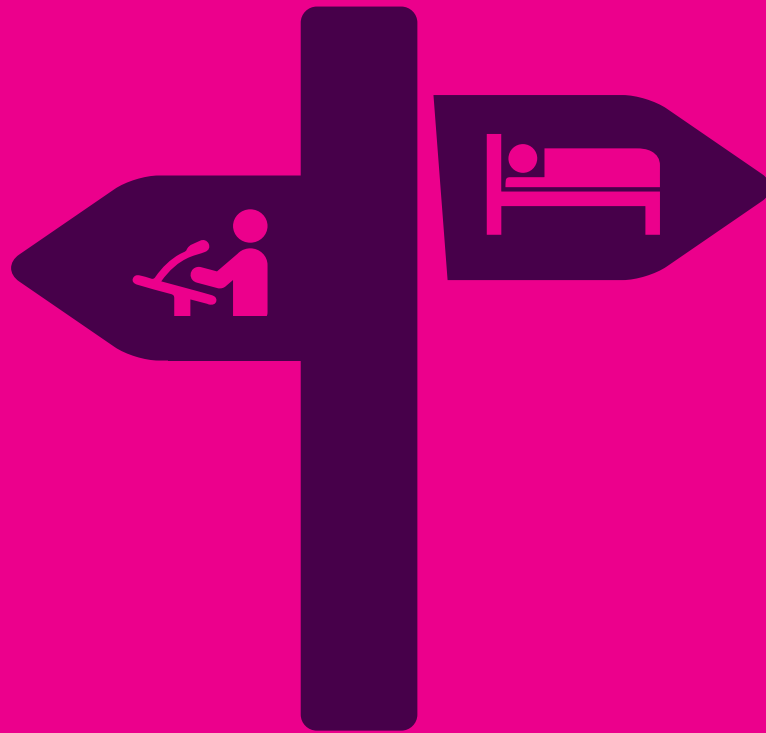
Prices and include Goods and Services Tax (GST). Based on 300 delegates.

ESTIMATED INCOME

		x 1	\$NZ	€	US\$
1. Total registration fee	Early bird registration	590	123,900	79,296.00	107,793.00
	Student early bird	300	18,000	11,520.00	15,660.00
	Standard registration	690	8,280	5,299.20	7,203.60
	Student standard fee	400	2,400	1,536.00	2,088.00
	Partners registration	115	1,380	883.20	1,200.60
3. Sponsorship money			16,000	10,240.00	13,920.00
TOTAL ESTIMATED INCOME			169,960	108,774.40	147,865.20

ESTIMATED EXPENSES

	\$NZ	€	US\$
Marketing and communications	3,180	2,035.04	2,766.38
Speaker travel and accommodation	0	0.00	0.00
Venue and equipment hire costs	5,261	3,367.20	4,577.29
Catering (morning, afternoon teas and lunches over duration of conference)	73,500	47,040.00	63,945.00
Conference materials ie handbook, name tags etc	11,040	7,065.60	9,604.80
Social functions	51,256	32,803.52	44,592.29
Finance	4,704	3,010.24	4,092.05
Event management/facilities management/registration management	6,216	3,978.08	5,407.70
Admin costs and credit card fees	4,114	2,633.09	3,579.36
TOTAL ESTIMATED EXPENSES	159,270	101,932.77	138,564.86
PROFIT/LOSS	10,690	6,841.63	9,300.34



Venue and accommodation



Proposed venue: The Owen G. Glenn Building

Opened in 2008, the Owen G. Glenn Building (OGGB) at the University of Auckland is one of the city’s most architecturally striking buildings.

Situated in the heart of the city campus, the OGGB is just minutes from downtown Auckland and has a myriad of café and accommodation providers at its doorstep. Equipped with the latest digital technology and teaching facilities, the OGGB also offers sweeping views of the Auckland Domain and Rangitoto Island, making it a unique location for learning.

Building facilities

The OGGB offers a range of purpose-built teaching facilities ideal for the conference plenary and sessions:

- Two 569-seat lecture theatres
- Two 290-seat lecture theatres
- One 142-seat lecture theatre
- Four 70-seat case rooms
- Two 50-seat seminar rooms
- 16 seminar/meeting rooms of various sizes up to a maximum of 50 seats

Lecture theatre technology

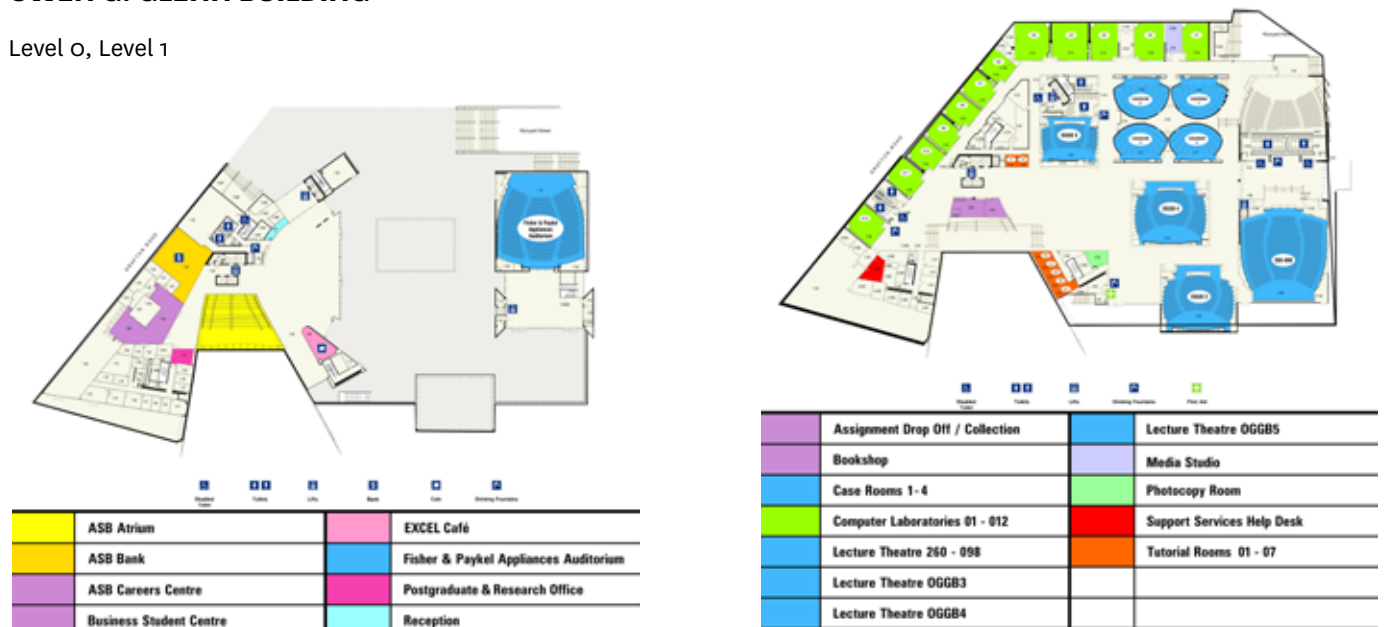
The OGGB lecture theatres are equipped with the following:

- Dual screens
- Dual projectors
- Lecture computer
- Guest input
- RCA connections for VHS, DVD, and audio
- DOC camera
- VHS/DVD player
- Touch AMX controller system for control of MIC lights and data projectors
- Lapel microphone
- Lecture microphone

The case rooms have a similar set-up, with a single screen and single data projector.

OWEN G. GLENN BUILDING

Level 0, Level 1





Venues for social events

Auckland offers many options for the welcome ceremony, speaker's dinner and gala dinner. We have profiled three venues that are within walking distance of the conference venue.

The Fale Pasifika - The University of Auckland

Located next to the OGGB, the Fale Pasifika is an iconic building on the university campus and plays an important role as the touch point between the university and Pacific communities. Opened in October 2004, the Fale Pasifika is a traditional Pacific Island meeting house. It is the second-largest in the Southern Hemisphere and stands 12 metres high. The timber framework is made from New Zealand radiata pine, some of which was laminated to produce the traditional roof. Both traditional and contemporary Pacific artworks feature in the interior. It is an ideal place for hosting cocktail functions and seated dinners. Prepare to be immersed in Pacific culture.

Auckland Museum

The copper dome on the roof of Auckland Museum has 360 views over Auckland, making it a truly spectacular venue. Guests can make the most of everything the Museum has to offer with a private tour of the galleries or a performance from the Museum's resident Maori cultural group.

The Pullman Hotel – Top of the Town

Located on the top floor of the main tower, Top of the Town offers unsurpassed views of Auckland's harbour and city. This venue is ideal for luxury functions such as welcome receptions and speaker dinners, holding a maximum of 140 people.

The chic, newly refurbished décor and unique outlook are guaranteed to impress.



Accommodation in Auckland

With over 6,000 rooms available - from five-star international hotels to budget-friendly backpackers - Auckland has options to suit everyone.

The following is just a small selection of key hotels within close walking distance to the proposed conference venue.

Key

Conference venue

5 star hotel

4+ star hotel

4 star hotel

3+ hotel

4+ star backpacker


See table on the following page for individual hotel details.

AUCKLAND CENTRAL BUSINESS DISTRICT



INTERNATIONAL RADIATION SYMPOSIUM 2016 ROOM RATES

The table below provides an overview of room rates sourced for International Radiation Symposium 2016.

 Hotel	Qualmark star rating	Walking time to venue (minutes)	Room type	Room rate commissionable and including gst	
				NZD	USD
1 Hilton Auckland	5	25	Guest room	279	243
			Superior King room	200	174
2 Pullman Auckland	5	5	Luxury rooms ROH	249	217
3 SKYCITY Grand Hotel	5	15	Luxury suites	449	391
4 Sofitel Auckland Viaduct Harbour	5	25	Superior room	265	231
5 Stamford Hotel Auckland	5	15	Classic	250	218
6 The Langham, Auckland	5	10	Executive	300	261
			Standard rooms	195	170
7 Crowne Plaza	4+	15	Superior room	209	182
8 Heritage Auckland	4+	15	Deluxe suite	234	204
			Deluxe King/twin ROH	245	213
9 Rendezvous Grand Hotel Auckland	4+	10	Premium rooms ROH	209	182
10 Copthorne Hotel Auckland City	4	7	Superior double/twin	155	135
11 Mercure Auckland	3+	10	Standard guest room	169	147
			Deluxe guest room	199	173
12 Nomads Auckland Backpackers	Backpacker 4+	15	Dorm	27	23
			Private	130	113
13 YHA Auckland International	Backpacker 4+	3	Dorm	35	30
			Private	102	89

Note Rates are per room, per night and indicative of 2018. Price ranges are due to varying room types. Room allocations can be increased upon confirmation of the event. Additional accommodation is available in Auckland and can be sourced.

Hilton Auckland

hilton.co.nz

One of New Zealand's most stylish destinations, Hilton Auckland has a unique waterfront location near the central business district and the vibrant Viaduct Harbour precinct. This 165 room hotel has stunning harbour views and flexible conference and event spaces. Guests will enjoy the contemporary design, effortless functionality and impeccable business-focused service.



Pullman Auckland

pullmanhotels.com

Pullman Auckland enjoys stunning views of the Auckland harbour's and parks. The hotel is located just a few minutes' walk from the city centre and within easy access of many Auckland attractions. The hotel offers 270 beautifully appointed European style guest rooms and suites in the 14 storey Pullman Tower, complemented by 70 deluxe rooms, one and two bedroom apartment style suites and penthouses in the 17 storey residences. Spa at the Pullman offers six New Zealand themed treatment rooms, fully equipped gym, 25 metre heated swimming pool, whirlpool, sauna and steam room - an ideal offering for those with fitness and relaxation in mind.

SKYCITY Grand Hotel

skycityauckland.co.nz

Discover an oasis of luxury in the vibrant heart of Auckland - indulgent, sophisticated and restful. The Qualmark rated 5-star, 312 room SKYCITY Grand Hotel offers a range of facilities

and services unparalleled in Auckland. There is no doubt this hotel can offer a superior experience, with a range of lead-in luxury rooms, 17 standard suites and three grand presidential suites, along with a 10-room day spa, fully-equipped gymnasium and 25 metre lap pool, limousine service, 24-hour room service, and four restaurants onsite within the hotel (three with award-winning chefs - Peter Gordon, Al Brown and Sean Connelly - at the helm).

Stamford Plaza

stamford.com.au/spak

Located in the heart of Auckland's CBD, the Hotel is only a few minutes walk from the popular Viaduct and Wynyard quarter areas, high street shopping, and water front.

All 286 (including 15 suites) air-conditioned rooms include satellite TV, a minibar and tea and coffee making facilities.

Guests can relax in the sauna, or enjoy swimming in the heated indoor pool. Stamford Plaza Auckland also offers a 24-hour front desk and dry cleaning.



Sofitel Auckland Viaduct Harbour

sofitel.com

Sofitel Auckland Viaduct Harbour is located in the heart of Auckland's waterfront, a unique maritime experience between vibrant Viaduct Harbour and Wynyard Quarter. Inspired by New Zealand's landscape and culture and boasting panoramic views of the Waitemata Harbour, this beautifully



The Langham, Auckland

langhamhotels.co.nz

Distinguished among Auckland hotels, this 5-star hotel embodies enchanting hospitality and elegance in the heart of this vibrant city.

The seasoned traveller will appreciate the variety of rooms and facilities. The Langham, Auckland has to offer, including a complimentary city shuttle and luxury limousine service.

Crowne Plaza Auckland

crowneplaza.co.nz

Conveniently located in the heart of Auckland's central business district, above the Atrium on Elliott shopping complex, Crowne Plaza Auckland is the ideal base for visiting delegates. Featuring 352 spacious, well appointed guest rooms and suites, including interconnecting and accessible rooms, Crowne Plaza Auckland caters for all accommodation requirements.

Copthorne Hotel Auckland City

www.millenniumhotels.co.nz

This welcoming Auckland city hotel is centrally located, within easy walking distance of Queen Street shopping, Auckland's Central Business District and Auckland University. Auckland's Viaduct Basin and Vector Arena are less than 10 minutes walk away, and there is easy motorway access to greater Auckland and northern and southern gateways.

Heritage Auckland

heritagehotels.co.nz

Whether it be for one night or an extended stay, every guest needs a home away from home. Heritage Auckland provides that and much more. Located within one of the city's most iconic historical landmark buildings, the former Farmers department store, it's an Auckland accommodation experience without equal.

The hotel features an indoor swimming pool, spa pool, sauna, gym and a floodlit tennis court.



Rendezvous Grand Hotel Auckland

rendezvoushotels.com

Located in the very heart of cosmopolitan Auckland, a stay at Rendezvous Grand Hotel places guests within walking distance of some of the city's finest dining, shopping and entertainment, including Queen Street and the Viaduct Harbour. The hotel is also linked via an underground tunnel to four of Auckland's most significant venues - Aotea Centre, The Civic, Auckland Town Hall and Aotea Square.



SKYCITY Auckland Hotel

skycityauckland.co.nz

One of New Zealand's most popular hotels, the Qualmark rated 4+ star SKYCITY Hotel offers 323 recently refurbished rooms and a place to relax and unwind with world-class entertainment onsite. Adjacent to the SKYCITY Auckland Convention Centre and with direct air-bridge access to the venue, this is the ideal mid-range conference hotel. Part of the buzzing SKYCITY entertainment precinct, there are over 17 bars, cafés and restaurants to choose from onsite, along with the SKYCITY Casino and the iconic Sky Tower right on the doorstep.

Mercure Auckland

mercure.com

Mercure Auckland is ideally located in the heart of Auckland's main business, shopping and restaurant districts, just minutes' walk to the vibrant Viaduct Harbour, Vector Arena and ferry terminals, providing easy access to Waiheke Island, Devonport, the Hauraki Gulf islands and ferry cruises.

YHA Auckland International

yha.co.nz

The YHA Auckland International is 4-star plus Qualmark rated, staffed 24 hours and offers excellent amenities. Centrally located, this YHA combines the excitement of the city with safe and secure accommodation.

The hostel can cater to individual

travellers, families and groups and offers a range of clean and comfortable rooms from different sized dorm rooms (male or female only available), to private twin and double en suite rooms.

Nomads Auckland Backpackers Hostel

nomadsworld.com

This beautiful historic building is packed with all the latest mod cons like a spa and sauna, rooftop kitchen, sundeck and Fort Street Union Bar on the first floor.

Nomads Auckland Backpackers Hostel perfectly located on Fort Street in the heart of downtown Auckland. Nomads Auckland has some of the best facilities you will ever find in a backpackers hostel, from deluxe en-suite private rooms with tv, to elegantly appointed shared accommodation with crisp clean linen.

With the sea right on the city's doorstep, you get the best of both worlds. Auckland's beautiful harbour sets the scene for a huge array of group activities – kayaking, sailing, jet boating, heli-fishing and plenty more. Discover the Hauraki Gulf's emerald islands, from the open wildlife sanctuary of Tiritiri Matangi to Waiheke, the 'island of wine' and the jewel of the gulf. Return to the city and take your pick from hundreds of restaurants and bars, catering for large groups or intimate, exclusive dining.



Pick

your vehicle



choose

your vintage



**Beyond the
official programme**

Set off for the Hauraki Gulf and Islands from Auckland's downtown ferry terminal and viaduct harbour, located right in the heart of the CBD



Experience Auckland

With an irresistible combination of magnificent natural scenery and a vibrant city lifestyle, Auckland is a place of exciting contrasts and endless adventures. From beautiful scenery, action and adventure, to world-class shopping, fine food and wine and rich culture, here's just a taste of what you'll find in Auckland.

On the water

Auckland is surrounded by water, with the sea right on the city's doorstep. There are so many ways to explore, from jet boating and kayaking to sunset dinner cruises and scenic ferry rides. You can even help sail an America's Cup yacht.

Island adventures

Auckland's Hauraki Gulf Marine Park encompasses 1.2 million hectares of coast, sea and islands – and it's so easy

to explore. The jewel of the Hauraki Gulf is Waiheke Island, a haven of beautiful vineyards, olive groves and beaches – just a 35-minute ferry ride from downtown Auckland. You can sample award-winning drops from some of the island's 30 boutique vineyards, enjoy fine dining and take in the island's stunning views of the outer Hauraki Gulf and city.

Take a ferry or kayak to Rangitoto Island, Auckland's most iconic natural landmark, where you can walk or

take a guided 4WD tour to the summit for breathtaking 360-degree views. Tiritiri Matangi Island is an open wildlife sanctuary and one of the most successful conservation projects in the world, making it a great destination for nature lovers. Discover the crystal-clear waters of Kawau Island, the fascinating history of Rotoroa Island – now open to the public for the first time in 100 years – or the remote untouched wilderness of Great Barrier Island.

Arts and culture

Immerse yourself in Māori and Pacific culture.

See the amazing collection of Māori taonga (treasures) at Auckland Museum, where you can also catch a traditional Māori cultural performance. Take a walking tour of Auckland's volcanoes with a guide from the local Māori iwi (tribe) and learn about the Māori people's special connection to the land. Visit Auckland Art Gallery Toi o Tāmaki, which houses more than 15,000 artworks, from the old masters and some of New Zealand's best contemporary artists.



Take a walk through Voyager New Zealand Maritime Museum to discover the way the sea has shaped New Zealand's history and cultural identity. Learn about the Polynesian people's epic migration to New Zealand on traditional sailing waka (canoes) or go sailing in a waka yourself. Auckland's rich cultural heritage can be seen, felt and experienced all throughout the region.

Shopping

It's easy to indulge in some top-notch retail therapy when you're in Auckland.

The beautifully restored historic buildings in **Britomart** are home to the flagship stores of New Zealand's most internationally successful designers, including Zambesi, WORLD and Kate Sylvester. These sit alongside top international fashion and beauty labels.



Hop on a free bus from the city centre and find yourself at one of Auckland's other top fashion precincts within minutes. **Ponsonby Road, Parnell, Newmarket** and the **High Street/Vulcan Lane** quarter of the city offer everything from the exclusive to the quirky. You can also browse local markets to pick up quality foods, fashion and Kiwi arts and crafts.

Food and wine

Surrounded by fertile land and rich waters, Auckland is blessed with great produce on its doorstep.

These days it also boasts world-class chefs, food producers and winemakers, and is internationally recognised as a foodie destination. From degustation delights to seafood restaurants and ethnic fusion, it's all here.

Auckland is also surrounded by wine regions, with more than 80 vineyards within 20 kilometres of the central city. Sample award-winning wines on an exclusive tour, excite the taste buds on a food tour, or enjoy great local produce at the Auckland Fish Market, or one of the region's many farmers' markets.



From mild to wild

Auckland's extraordinary variety means there's an adventure to suit everyone.

You can bungy jump off the Auckland Harbour Bridge, go canyoning down waterfalls, heli-fish on a distant Hauraki Gulf island or quad bike through the forest. For something more mellow, walkers can tramp through native rainforest or along spectacular coastal paths in Auckland's regional parks, go horse riding along a deserted white-sand beach, or indulge in luxury spa treatments or personalised shopping tours.

Golf

With more than 40 coastal and inland courses throughout the region, Auckland is an ideal spot for a round of golf.

Whether you're after international quality resort courses or picturesque local gems, there's a perfect round for players of all abilities.



Onsite information and activities desk for delegates
Auckland Convention Bureau can provide a free mobile i-SITE desk onsite, so that your delegates can discover and book things to do and places to go during and after the conference.

**AOTEAROA,
NEW ZEALAND**



Beyond the official programme

Where else in the world can you be snorkelling in crystal-clear waters mid-morning and skiing powdery snow just a few hours later? Or exploring stunning rainforest one hour and sailing on an America's Cup yacht in a glorious harbour setting the next?

This combination of natural beauty and a cosmopolitan lifestyle, together with the fact that travelling here is extremely cost-effective, makes New Zealand the perfect destination for business and pleasure. Precious, diverse New Zealand is just waiting to be discovered - and the journey is an experience you will never forget. Choose parts of the following New Zealand experience itinerary or take the time to enjoy it all.

Auckland

While in Auckland, New Zealand's largest city, enjoy the best in local food, wine and shopping, and the beautiful scenery of this harbour city. Spend a half day out on the Waitemata Harbour on one of the America's Cup racing yachts or take a guided walk through Auckland's volcanic landscape. Travel north across Auckland's Harbour Bridge and along the beautiful Hibiscus Coast to the Bay of Islands.

Northland

On arrival in the Bay of Islands, visit the Waitangi Treaty Grounds. Considered to be the birthplace of New Zealand as a bicultural nation, the Waitangi Treaty Grounds are set in an extensive park-like reserve. Learn about the first Māori canoes to New Zealand, the signing of the Treaty of Waitangi and visit Te Whare Runanga, a fully carved Māori Meeting House which is representative of all Iwi (regional tribes) in New Zealand. While in Northland take a stroll among 1000-year old kauri trees at Puketi Forest. Pass by golden sand beaches

at Whangaroa, Coopers Beach, Cable Bay and Taipa. The departing place for Māori spirits is Cape Reinga, where the Tasman Sea and mighty Pacific Ocean crash together beneath the Cape Reinga Lighthouse. Other highlights include Te Paki Quicksand Stream, thrilling sand tobogganing on body boards down the giant Te Paki Sand Dunes and travelling by coast down the vast Ninety Mile Beach. Travelling back to Auckland and then south over the Bombay Hills, following the Waikato River to Hamilton, then on via Te Awamutu to Waitomo. Visit the Waitomo Caves and enjoy the magical boat ride through the Glow-worm Grotto. Continue on via Lake Karapiro to arrive in Rotorua.

Rotorua

Enjoy a Māori hangi (feast) and concert in the evening. Rotorua is the centre of the geothermal region of New Zealand and is also a main centre for Māori culture. Boiling mud, geysers and silica deposits surrounding the lake attract visitors from all over the world. Enjoy a thermal tour - visit Whakarewarewa Thermal Reserve, Rainbow Springs and Farm Show and Lake Rotorua.

Perhaps take a tour to Mt Tarawera or the Buried Village or enjoy a swim at the Polynesian Spa. Travel south to New Zealand's capital city of Wellington, stopping at Taupo on the way. Enjoy the beautiful scenery of Lake Taupo, spend a day fly fishing on one of the many rivers or streams in the region or play a round of golf at the magnificent Wairakei International Golf Course.

Sailing on the Hauraki Gulf, Auckland



Giant Kauri tree, Northland



Maori traditional tattoo, Rotorua



Shopping,
Wellington



Wine tasting,
Martinborough



Lake Wakatipu,
Queenstown

Wellington

Arriving in Wellington after a beautiful drive along the Desert Road, make time for a guided tour of Te Papa Tongarewa, the national museum of New Zealand. Enjoy the dynamic blend of arts, culture, food and wine that the city has to offer. From Wellington you can take a day trip to the Wairarapa, a popular rural area and wine region where great food, wine and character accommodation can be enjoyed amid a stunning natural environment. Visit the wine village of Martinborough, with its boutique wineries and vineyards. Depart Wellington for Picton on the Inter Island ferry.

Marlborough to Christchurch

From Picton it is just a short drive to Marlborough, a natural paradise of mist-hazed hills, sheltered waterways and sun-drenched plains, and worldrenowned for its Sauvignon Blanc wines and gourmet delights. From Picton, board the Coastal Pacific Train, which winds its way along the magnificent East Coast to Christchurch. Enjoy Christchurch, New Zealand's garden city and take a tour around public and private gardens. Explore the city or experience a horse trek over the hills of Banks Peninsula.

McKenzie Country

From Christchurch, travel south across the Canterbury Plains, through farming communities before climbing up to the high plains of McKenzie Country, pausing at the Church of the good Shepherd to view Lake Tekapo. Continue to Mount Cook village nestled under New Zealand's highest mountain, Mount Cook.

The mountain overlooks a network of glaciers that feed Lakes Tekapo and Pukaki. There are a number of activities including walks, tramps and scenic flights that will enable views of Mount Cook and the glaciers. From Mount Cook, return along the length of Mount Pukaki then head south through Twizel and Omarama to the scenic Lindis Pass. Once over the pass, follow the Clutha Valley to its junction with

the Kawarau Gorge at Cromwell. Queenstown is reached by following the 'gold trail' alongside the winding Kawarau River.

Queenstown

Queenstown nestles up to the northern shore of Lake Wakatipu, from where it commands an expansive view of the peaks that surround the lake.

Take a Milford Sound day excursion from Queenstown. Drive through the magnificent beech forests of the Eglington and Hollyford Valleys, through the Homer Tunnel to Milford Sound for a launch excursion on the fiord. Enjoy the breathtaking scenery including the awe-inspiring Mitre Peak, plus a full commentary on the natural history of the fiord. Return to Queenstown via coach or take a flight back on a small plane.

Enjoy time in Queenstown, the adventure capital of the world. Go bungee jumping, jet boating, white water rafting, hiking, climbing and horse trekking. Then enjoy a wine tour in one of the best wine regions in New Zealand. Depart for a full day journey from Queenstown to Franz Josef Glacier. During the trip you will traverse Kawarau Gorge, Hawera River and Lake Wanaka. Travel through Haast and continue on to the magnificent Franz Josef Glacier.

Next, travel to Greymouth on board the scenic TranzAlpine Express. The rail journey is famous for its spectacular mountain scenery as it traverses the Southern Alps, which divide the east and west coasts of the South Island. Travel across the Canterbury Plains and back to Christchurch.



Average temperature in Auckland
(degrees celcius)



Kayaking,
Milford Sound

Useful information

Climate

Auckland sits on the equivalent latitude to San Francisco or Athens in the Northern Hemisphere. It has a 'maritime subtropical' climate. Temperatures during the warmer seasons (November – March) range from 20° to 30° Celsius. Temperatures in the cooler seasons range from 10° to 17° Celsius.

Currency

New Zealand dollars (\$) and cents (c). There are five notes (\$5, \$10, \$20, \$50, \$100) and five coins (10c, 20c, 50c, \$1, \$2).

Customs allowances

Visitors aged over 17 years may bring in 200 cigarettes, 4.5l of wine or 12 cans of beer and 1.125l of spirits. Goods over NZ\$700 may attract duty and tax.

Driving

Drive on the left side of the road in New Zealand. All drivers, including visitors from other countries, must carry their licence or permit at all times when driving. You will only be able to drive the same type of vehicles you are licensed to drive in your home country. The common legal age to rent a car in New Zealand is 21.

Electricity

240 volts, 50 Hertz, with Australian/New Zealand pattern three-pin sockets.

Emergency services

111 is the emergency number for Police, Fire and Ambulance.

Goods and Services Tax

New Zealand has a 15 per cent goods and services tax (GST). Overseas visitors cannot claim this back. Some stores may waive GST if you show onward or return air tickets, or international shipment is arranged.

Health and vaccinations

No vaccination certificates are required. Public and private hospitals provide a high standard of treatment and care. Medical services are not free to visitors. Health insurance is recommended.

Mobile telephones

New Zealand operates on a 900 or 1800 MHz network, as do most countries except Canada and USA. Mobile telephones from these countries will not operate in New Zealand. You can buy or rent a New Zealand compatible phone or SIM card upon arrival.

Postal services

You can buy stamps and post items at Post Shops. Stamps can also be purchased from stationers and many convenience stores. Look for red, black and white post boxes to post letters.

Shopping

Standard shopping hours from Monday to Friday are from 9am to 5pm. Some shops are open late on Thursday and Friday to 9pm. On Saturday and Sunday most shopping malls are open normal shopping hours.

Banks

Monday to Friday, 9am to 4.30pm. Some banks in shopping centres are also open during the weekend.

Telephone directory services

Most phone boxes require a phone card. These can be bought at convenience stores and service stations. Dial 018 for local directory assistance or 0172 for international directory assistance.

Time zone and seasonality

New Zealand Standard Time is 12 hours ahead of Greenwich Mean Time (GMT). Daylight saving runs from the end of September until early April when the clocks advance by one hour, i.e. GMT +13 hours.

Seasons are the reverse of the Northern Hemisphere, with the longest day around 21 December and the shortest around 21 June. Winter runs through June, July and August with a short autumn (April/May) and spring (September/October). Summery weather can usually be expected from November to March.

Tipping and service charges

Tipping is not expected but you may wish to tip for special service or kindness.

Visas

Currently travellers from more than 50 countries do not require a visitor's visa for stays of less than three months. For further information about visas please visit immigration.govt.nz.

Languages spoken

English is the common and everyday language in New Zealand, with Maori also an official language.

Smoke free policies

In New Zealand it is illegal to smoke in most indoor spaces, including workplaces, function venues, cinemas, pubs, restaurants, hospitality venues, as well as all public transport. Cigarettes cannot be sold to anyone under 18.

Safety and security

New Zealand is generally a very safe place to travel, with a relatively low crime rate. It is a democratic and politically stable country, with free elections held every three years and New Zealanders enjoy full civil liberties in terms of freedom of expression, belief, association, and personal autonomy.

New Zealand society's high respect for human rights, friendliness toward foreigners, along with the low risk of political instability and internal conflict, are just some of the reasons that it is rated second on the Global Peace Index for 2012. However it is advisable to observe the same precautions with your personal safety and your possessions as you would in any other country or at home.

For more information

AUCKLAND CONVENTION BUREAU

Auckland Tourism, Events and
Economic Development

PO Box 5561

Wellesley Street

Auckland 1141, New Zealand

E estelle.carmichael@aucklandnz.com

P +64 9 365 0587

aucklandnz.com/conventions

TOURISM NEW ZEALAND

Manaakitanga Aotearoa

PO Box 91 893

147 Victoria Street West

Auckland 1142, New Zealand

E michael.stokoe@tnz.govt.nz

P +64 9 365 0587

business-events.newzealand.com